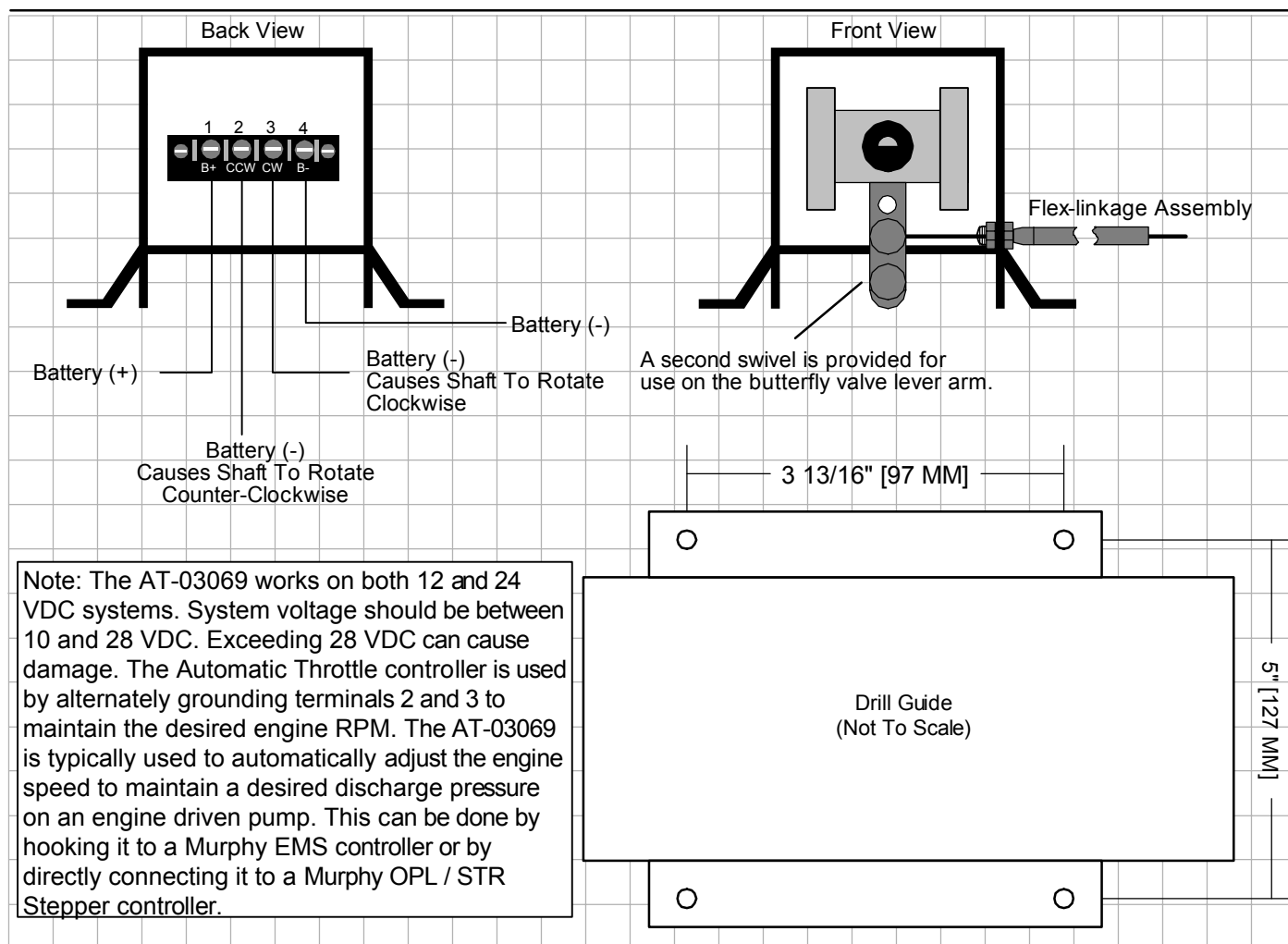


Instruction Sheet For The Murphy AT-03069 Engine Throttle Controller



When applying the AT-03069, please consider the operating environment. The case is designed to shed water from the top, but will collect water if mounted upside down. The control linkage has been specially designed to isolate vibration from the gear motor on the throttle actuator directly to the outer case. This control linkage must be used or vibration may seriously damage the internal gear motor. The flex linkage assembly has been removed for shipment and must be installed before use. The flex linkage assembly may be assembled in the right or left hand slots on the sides of the throttle actuator. The AT-03069 must be mounted close to, and in line with, the throttle block for straight line pull between the lever arm and the butterfly lever arm. **The throttle actuator should be mounted in a manner that minimizes the effects of excessive shock and vibration on the unit.**

A separate throttle block must be used if the engine is equipped with a governor or a manual control wire. The AT-03069 is not designed to override other controls. The butterfly valve must work freely.

1. Connect terminal #1 to battery (+).
2. Connect terminal #4 to battery (-).
3. Advance the lever arm to the full idle RPM position (fully clockwise or counter-clockwise by grounding #2 or #3 -- See above illustration.)
4. Connect the flex linkage wire to the butterfly lever arm. Alternately ground terminal #2 and #3 to determine the direction of travel. Select the mounting hole in the lever arm of the AT-03069 and on the throttle block butterfly arm to provide proper travel. Proper throttle travel is from the mechanical set idle point to just slightly above the point where the mechanical governor limits the engine RPM.
5. Visually inspect the linkage assembly to ensure that there are no sharp bends or kinks. If the linkage wire bows during operation, a center support should be added.
6. After correct travel is established, tighten the set screws and linkage assembly. **Note: The lever arm must be allowed to travel its full arc. This allows the unit to disconnect itself with internal limit switches. If the lever is unable to reach limit switches, damage to the unit can occur.**