

EL150EX SWITCH/TERMINAL KIT INSTALLATION INSTRUCTIONS



Please read the following information before installing. A visual inspection of this product for damage during shipping is recommended before mounting. It is your responsibility to have a qualified person install this unit and make sure it conforms to NEC and local codes.

GENERAL INFORMATION

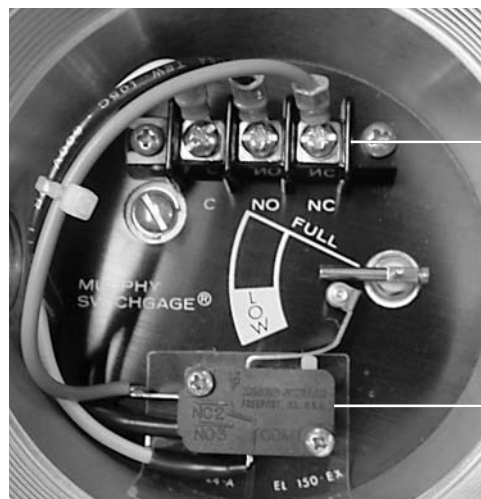
WARNING

BEFORE BEGINNING INSTALLATION OF THIS MURPHY PRODUCT

- ✓ Disconnect all electrical power to the machine.
- ✓ Make sure the machine cannot operate during installation.
- ✓ Follow all safety warnings of the machine manufacturer.
- ✓ Read and follow all installation instructions.

Installation

1. Place screws in terminal block mounting holes and fasten to the cover as shown in Figure 1.
2. Place clear plastic insulator behind microswitch and insert screws through microswitch mounting holes.
3. Place microswitch assembly inside the cover and tighten screws as shown in Figure 1. Make sure that all wires are placed along the left side of the cover and that they do not interfere with the operation of the unit.
4. Calibrate the microswitch by holding the microswitch arm down and bending the end of the arm up with needle nose pliers. (See Figure 2)
5. Hold the unit in hand, and move the float down while listening for the microswitch to “click”. Microswitch should “click” when pointer is between the **L** and **O** in the word **LOW** as shown in Figure 2.
6. Repeat steps 4 & 5 until microswitch “clicks” at the correct location.



Terminal Block

Microswitch Assembly

Figure 1.

Complete Installation of Switch/Terminal Kit

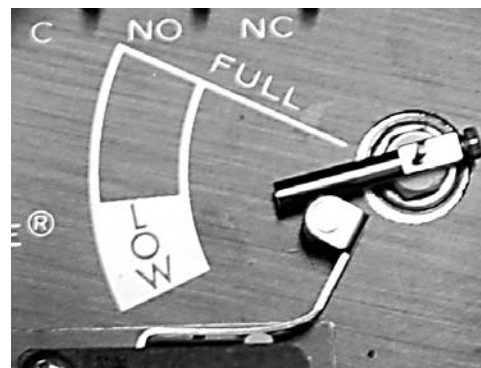


Figure 2.

Example of Correct Calibration

Warranty

A limited warranty on materials and workmanship is given with this FW Murphy product. A copy of the warranty may be viewed or printed by going to www.fwmurphy.com/support/warranty.htm

RJ Mann & Associates Inc.
Engine Controls & Panels/Compressor Parts

860 North 9th Avenue, Brighton, CO 80603
Ph: (303) 659-5139 Fax: (303) 659-5309
www.rjmann.com



Printed in U.S.A.