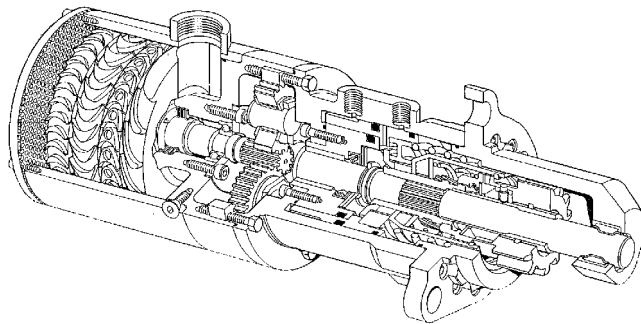


# Exhaust Configurations



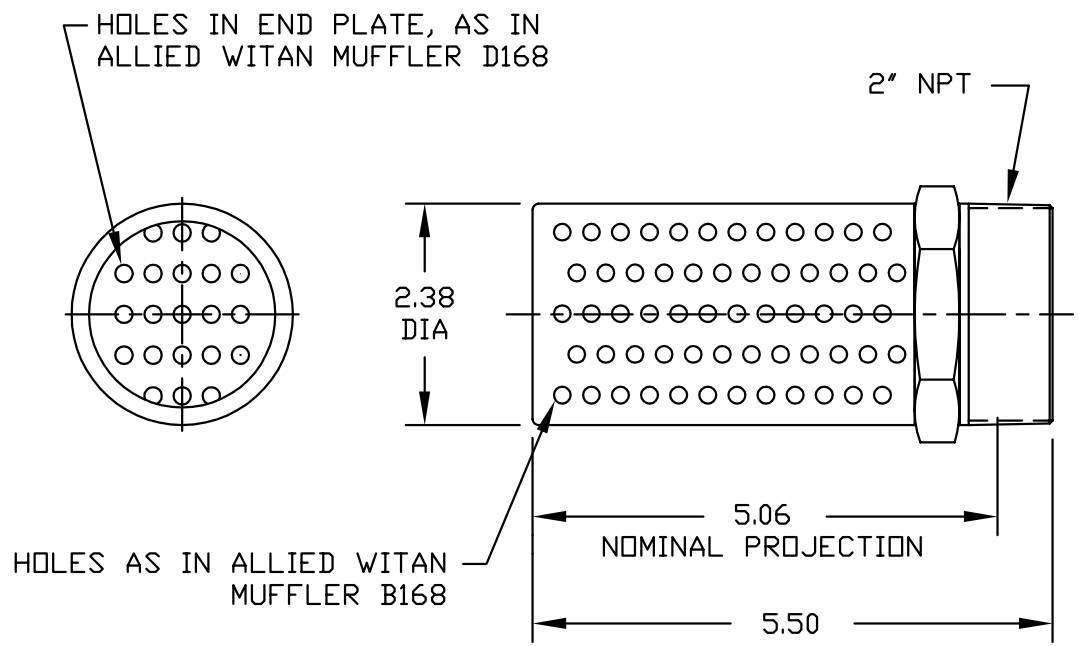
## MODEL: T30 Series *TURBO***TWIN** Engine Air Starter

REV	DESCRIPTION	DRAWN	CHECKED	APPROVED	ARCHIVED	REV	DWG NO.
A	REVISED PER EN 3707	RLF				A	23420

NOTES:

1. REF: PART IS SIMILAR TO ALLIED WITAN MUFFLERS B168 AND D168. THE DIFFERENCE IN AIR EXPULSION HOLES IS SHOWN.

Ⓐ 2. ALLIED WITAN PART NUMBER IS 0154168.



<b>CAUTION</b> READ ALL NOTES BEFORE STARTING WORK  REMOVE ALL BURRS  BREAK CORNERS .010 RADIUS UNLESS NOTED  DO NOT SCALE DRAWING	TOLERANCES UNLESS OTHERWISE SPECIFIED  DECIMALS .X ± .05 .XX ± .01 .XXX ± .005 .XXXX ± .0002	MATERIAL PER ALLIED WITAN SPECIFICATIONS   HEAT TREAT NONE	1234200A.DWG DOCUMENT CONTROL NUMBER:	2-23420 PART NUMBER	1882 USED ON	- - - NEXT ASSY	- - - NO. REQD	
	FRACTIONS ± -	ALL SURFACE FINISHES UNLESS OTHERWISE NOTED  		CHANGE RESTRICTED	THIRD ANGLE PROJECTION 	<b>TECH DEVELOPMENT, INC</b> 6800 Poe Avenue, Dayton, Oh 45414		
	ANGLES ± -		APPROVALS DRAWN R. FISTE CHECKED S/T.COONS ENGR S/T.COONS	DATE 23JUL87 27JUL87 27JUL87	DWG TITLE  <h1>MUFFLER</h1>			
	THIS DRAWING CONTAINS PROPRIETARY SUBJECT MATTER, IT IS NOT TO BE USED OR REPRODUCED, EITHER IN WHOLE OR IN PART, IN ANY MANNER WHATSOEVER, IN ABSENCE OF EXPRESS PERMISSION IN WRITING FROM TECH DEVELOPMENT, INC.			ISSUE APVD S/T.COONS 27JUL87	SIZE <b>A</b>	CAGE CODE 57301	DWG NO. 23420	SCALE NONE WT. SHEET 1 OF 1

4

3

2

1

DIM	"M"	"L"	Ø"F"	Ø"T"	Ø"H"	Ø"K"
.25	8	4.69	5.40	1.82	5.025	2-27250
.33	4	4.82	5.75	.281	5.275	2-27250-001

APPLICATION	PART NUMBER	USED ON	NEXT ASSEMBLY	QTY	ZONE	REV
	730	730-27398	1	1	-	RELEASED PER EN 5963
	150	150-27398	1	1	A	REVISED PER ECN 6339
					B	REVISED PER EN 6833
					C	REVISED PER EN 7244
					D	REVISED PER EN 7572
					E	REVISED PER EN 7604
					F	REVISED PER EN 7794

REVISION	DESCRIPTIONS	DRAWN	CHECKED	APPROVED	ARCHIVED
1	RELEASED PER EN 5963				
A	REVISED PER ECN 6339				
B	REVISED PER EN 6833				
C	REVISED PER EN 7244				
D	REVISED PER EN 7572				
E	REVISED PER EN 7604				
F	REVISED PER EN 7794				

05272 F

1

1

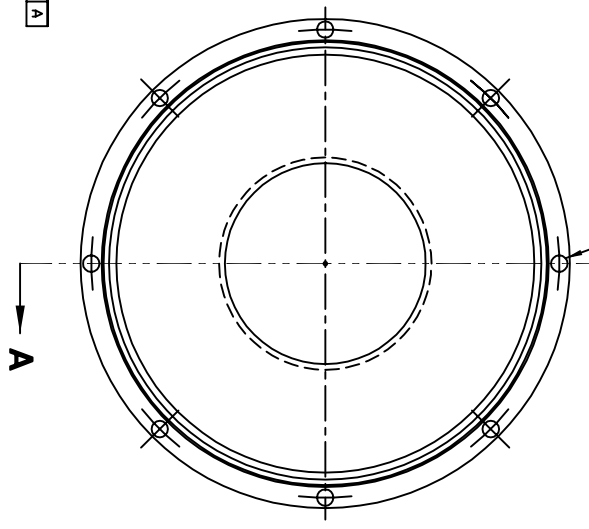
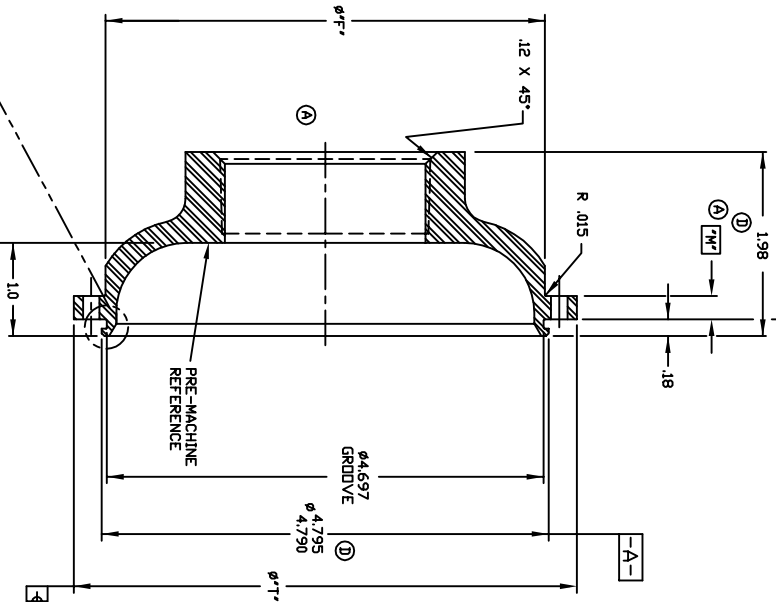
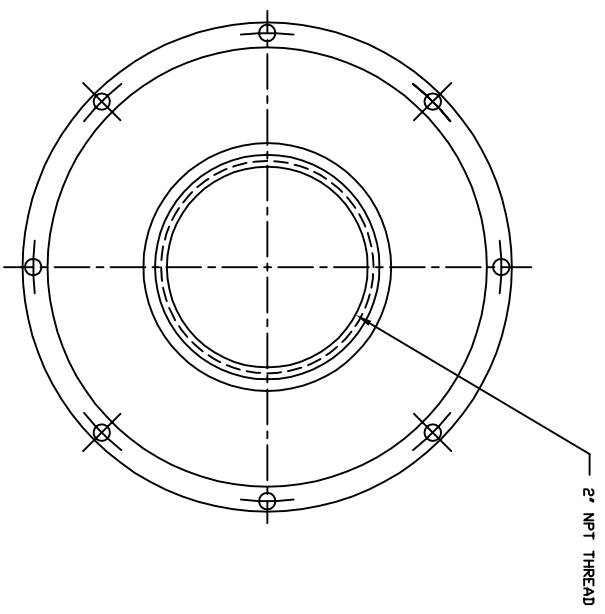
(A)

(B) .0025 A

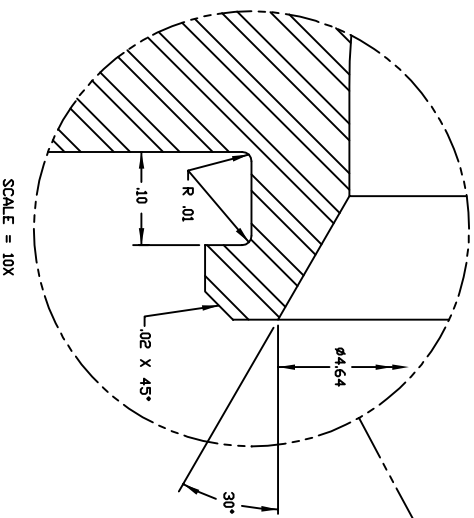
NOTES:

(D) (B) (F) 1. FINISH ZINC PLATE AND DICHROMATE SEAL

1.7 X Ø.4 THRU EQUALLY SPACED  
DN A Ø.14 (A) B



SECTION A-A



SCALE = 10X

CAUTION	TOLERANCES UNLESS OTHERWISE SPECIFIED	MATERIAL	MAKE FROM	COMPUTER GRAPHICS	CHANGE RESTRICTED	REVISION	DATE	DWG TITLE
READ ALL NOTES STRAIGHT EXHAUST REWORK ALL DIMENSIONS BEGUN UNLESS OTHERWISE SPECIFIED DO NOT SCALE	DECIMALS ± .05 FRACTIONS ± .0005 ANGLES ± .0025	BRASS	8-89199	12/25/00	12/25/00	2008C95	22/03/05	FITTING, STRAIGHT EXHAUST

**TDI** TECH DEVELOPMENT, INC.  
1800 Road Avenue, Dayton, OH 45414  
A Division of

APPROVALS  
DRAWN: R. FISTE  
CHECKED: S/DRAWALINS  
DATE: 2008C95  
DATE: 22/03/05

SIZE: C  
CASE CODE: 57301  
DWG NO.: 27250  
SCALE: 1/1  
SHEET 1 OF 1

F 27250

4

3

2

1

1

